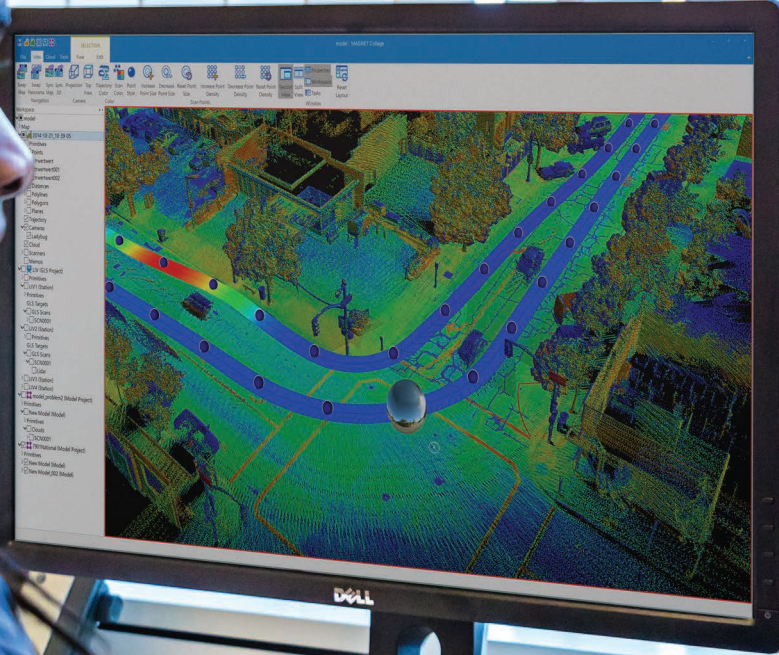


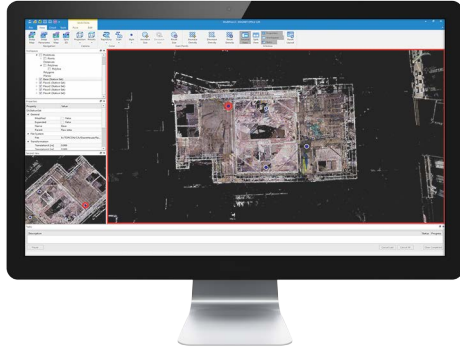


MAGNET COLLAGE/ MAGNET COLLAGE WEB

3D POINT CLOUD SOFTWARE AND SERVICES



MAGNET COLLAGE



Powerful point cloud solution Single environment

Process, combine, and analyze point clouds and images in one familiar, powerful application. MAGNET® Collage offers a single environment post-processing solution for a wide variety of mass data collection tools.

Process and register

- High-speed data processing 8x faster than previous software
- Advanced registration handling complex cloud-to-cloud and multi-level projects
- Full survey georeferencing capabilities including world map background
- Import data from Topcon or non-Topcon hardware

Visualize, analyze, and transfer

- Fly through and navigate with ease
- Clean up point clouds by removing points, reducing density, and smoothing
- Generate orthophotos, take measurements, draw points and linework
- Export deliverables to industry standard file formats



Scan Module
for GLS-2000



Mobile Module
For IP-S scanner



RD-M1 Module
Road surface scanning

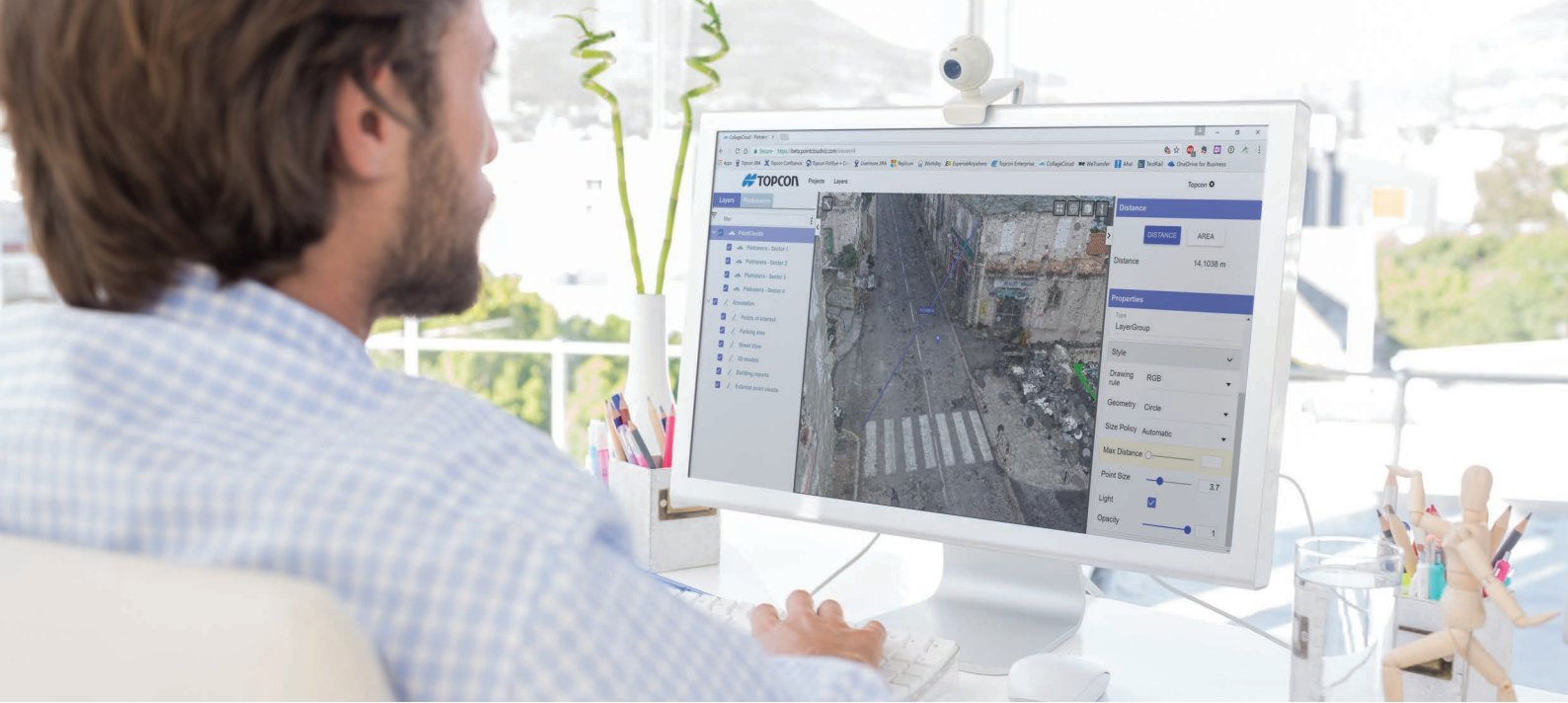
Canvas module

- Functionality engine included with all kits
- Fuse data from all sensor types, analyze, and export
- Import UAV point clouds after post-processing by photogrammetric software
- Free viewer to share projects

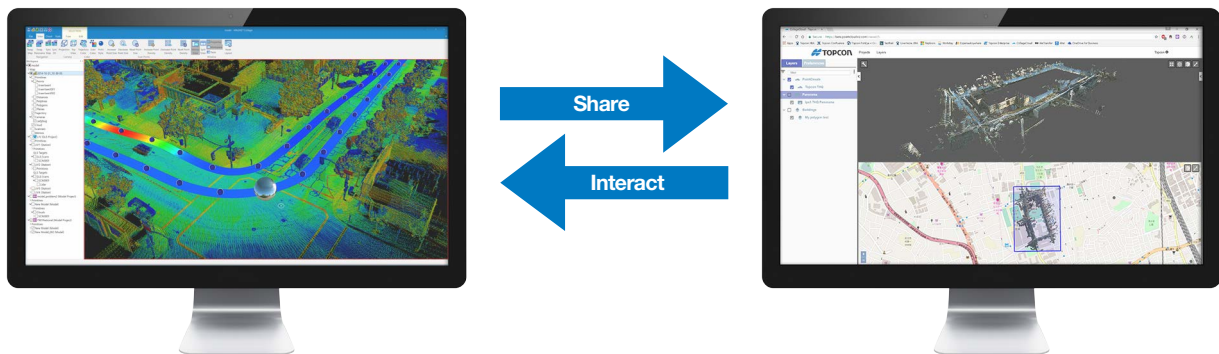
Trajectory module

- Required when scanners are mounted on vehicles

System Requirements	
Operating System	64-bit Windows 7, 8, 10
CPU	Intel Core i7, Xeon (4 cores, 8 threads) or higher
RAM	DDR3 8GB or higher
Graphic Card	Nvidia, VRAM 512MB or higher
Storage	SSD 500GB or higher is recommended
Monitor	Resolution: SXGA (1280x1024) or higher



MAGNET COLLAGE WEB



Collaboration made easy.

Share point clouds with project stakeholders who can view, interact, and edit all from a web browser. Captured point clouds and photos processed by MAGNET Collage Office can be published to Collage Web for sharing and collaborating.

View

- Unrivaled web-based rendering performance and advanced features
- See high-resolution point clouds in a web browser
- 3D, panorama, and map views with split-screen functionality

Share

- Easily share and collaborate on datasets with users inside or outside of your organization

Analyze

- Measure distances and areas
- Define GIS features with customizable attributes
- Extract profiles and cross-sections
- Export deliverables to industry-standard file formats

Compatible web browsers

- Windows: Chrome, Firefox, Edge
- Linux: Chrome, Firefox
- MacOS: Chrome, Firefox



Capture and Process

Share and Collaborate

MAGNET COLLAGE

Total solution to manage and get more out of your 3D point cloud data.

Subscribe today

Available in one-year subscription with upgrade deals for legacy software users.

Part Description	What is Included				
	Canvas Module	Scan Module	Mobile Mapping Module	RD-M1 Module	Trajectory Module
Canvas Kit	X				
Scan Kit	X	X			
Mobile Kit	X		X		Required
Scan and Mobile Kit	X	X	X		Required
RD-M1 Kit	X			X	Required

MAGNET COLLAGE WEB

Seamlessly integrates with Collage desktop software to visualize, share, and collaborate.

Visit topconpositioning.com/collageweb today for a real-time fly-through.

Subscribe today

- Monthly subscription for 50GB storage, 100GB of streaming, and up to 5 users
- Up to 5 simultaneous users



For more information:
topconpositioning.com/magnet-collage

Specifications subject to change without notice.
 ©2017 Topcon Corporation All rights reserved.
 7010-2239 A 7/17

